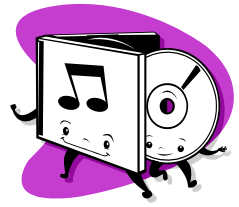


Coventry Parks & Recreation 2010 Summer Concert Series



SUNDAY NIGHTS

Concerts begin at 6pm and are held at:
Paine Field, Rte 117, Foster Park, Station St, Rice Field, Rte 116 and Briar Point Beach

Concerts at Paine Field

July 11th *Zee's Country Band*
(5 piece oldies and country)

July 18th *Bandstand Revue*
(5 piece oldies showband)

July 25th *Billy Shears Band*
(Beatles music)



Concerts at Foster

August 1st *Vini Ames & Sh-Bop*
(50's & 60's music)

August 8th *Gemini*
(3 piece oldies and ethnic)



Concerts at Rice Field

August 15th *Black and White Band*
(Blues/swing/jazz)

August 22nd *Avenue A*
(4 piece, swing, jazz)



Concerts at Briar Point Beach

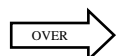
August 29th *Rockin' Soul Horns*
(8 piece rhythm & blues, soul & MoTown)

September 5th *Bill Harley*
(Grammy award winner -family performance)

In the event of rain, all concerts will be moved to the inside of the Community Center's upstairs main hall, 1277 Main St Rte 117. **Blankets or lawn chairs are suggested.**

No smoking or Alcoholic Beverages Allowed.

Donations will be accepted.



TOWN OF COVENTRY PARKS & RECREATION DEPT. 822-9107

Paine Field - Coventry Recreation Community Center

Directions:

Route 95 South, Exit seven (7), (Coventry - West Warwick)

Turn Right at the end of the ramp, stay in right lane and proceed to four (4) corners. Turn Left at that second traffic light onto Arnold Road. Proceed approximately two (2) miles to traffic light at Tiogue Avenue (Rte. 3). Go straight through intersection onto Sandy Bottom Road (Rte. 33). Proceed past Shopping Plaza to traffic light. Turn left onto Main Street (Rte. 117). Coventry Recreation Community Center is approximately 1 mile on Right hand side. (You will go through 2 traffic lights and we are after Jerry's Market/Family Dollar Plaza.)

Directions:

Route 95 North, Exit seven (7), (Coventry - West Warwick)

Turn Left at the end of the ramp, stay in right lane and proceed to four (4) corners. Turn Left at traffic light onto Arnold Road. Proceed approximately two (2) miles to traffic light at Tiogue Avenue (Rte. 3). Go straight through intersection onto Sandy Bottom Road (Rte. 33). Proceed past Shopping Plaza to traffic light. Turn left onto Main Street (Rte. 117). Coventry Recreation Community Center is approximately 1 mile on Right hand side. (You will go through 2 traffic lights and we are after Jerry's Market/Family Dollar Plaza.)

Foster Park

Directions:

Route 95 South, Exit seven (7), (Coventry - West Warwick)

Turn Right at the end of the ramp, stay in right lane and proceed to four (4) corners. Turn Left at that second traffic light onto Arnold Road. Proceed approximately two (2) miles to traffic light at Tiogue Avenue (Rte. 3). Go straight through intersection onto Sandy Bottom Road (Rte. 33). Proceed past Shopping Plaza to traffic light. Turn left onto Main Street (Rte. 117). Proceed ½ mile; take a right at the Washington Fire Station (Station Street).

Foster Park is ¼ mile up on your right hand side.

Directions:

Route 95 North, Exit seven (7), (Coventry - West Warwick)

Turn Left at the end of the ramp, stay in right lane and proceed to four (4) corners. Turn Left at traffic light onto Arnold Road. Proceed approximately two (2) miles to traffic light at Tiogue Avenue (Rte. 3). Go straight through intersection onto Sandy Bottom Road (Rte. 33). Proceed past Shopping Plaza to traffic light. Turn left onto Main Street (Rte. 117). Proceed ½ mile; take a right at the Washington Fire Station (Station Street).

Foster Park is ¼ mile up on your right hand side.

Rice Field

Directions:

Route 95 South, Exit seven (7), (Coventry - West Warwick)

Turn Right at the end of the ramp, stay in right lane and proceed to four (4) corners. Turn Left at that second traffic light onto Arnold Road. Proceed approximately two (2) miles to traffic light at Tiogue Avenue (Rte. 3). Go straight through intersection onto Sandy Bottom Road (Rte. 33). Proceed past Shopping Plaza to traffic light. Turn right onto Main Street (Rte. 117). Proceed under bridge and take first left onto Rte. 116. Rice Field is on your right hand side immediately after the Knotty Oak Baptist Church.

Directions:

Route 95 North, Exit seven (7), (Coventry - West Warwick)

Turn Left at the end of the ramp, stay in right lane and proceed to four (4) corners. Turn Left at traffic light onto Arnold Road. Proceed approximately two (2) miles to traffic light at Tiogue Avenue (Rte. 3). Go straight through intersection onto Sandy Bottom Road (Rte. 33). Proceed past Shopping Plaza to traffic light. Turn right onto Main Street (Rte. 117). Proceed under bridge and take first left onto Rte. 116. Rice Field is on your right hand side immediately after the Knotty Oak Baptist Church.

Briar Point Beach

Directions:

Route 95 South, Exit seven (7), (Coventry - West Warwick)

Turn Right at the end of the ramp, stay in right lane and proceed to four (4) corners. Turn Left at that second traffic light onto Arnold Road. Proceed approximately ¼ mile and take right onto Briar Point Ave. Follow signs to Briar Point Beach.

Directions:

Route 95 North, Exit seven (7), (Coventry - West Warwick)

Turn Left at the end of the ramp, stay in right lane and proceed to four (4) corners. Turn Left at traffic light onto Arnold Road. Proceed approximately ¼ mile and take right onto Briar Point Ave. Follow signs to Briar Point Beach.