

**TOWN OF COVENTRY
PARKS & RECREATION DEPARTMENT**



**SUMMER
PLAYGROUND
PROGRAM
2009**

Celebrate July as National Parks & Recreation Month

Take advantage of what your recreation department provides you.

**“Walk the Greenway, Relax and Go fishing,
Swim at our Beach or Attend a Concert”**

REGISTRATION INFORMATION pg. 1

NEW SITE LOCATIONS & FIELD TRIPS pg. 2

PLAYGROUND PROGRAM POLICIES pg. 3

BRIAR POINT BEACH INFORMATION pg. 7

SUMMER CONCERT SCHEDULE pg. 8

Guy L. Lefebvre, Director

Jason Licciardi, Program Supervisor

Abby Pimentel, Program Assistant

Michelle Bell, Special Duties Clerk

Proof of Residency of the Custodial Parent is Required

****We do not give refunds****

Summer Playground Program Registration

WHEN: Registration begins on Saturday, June 6th from 8-11am in the Community Center’s upstairs main hall.

HOW MUCH: Because of the on-going budget deliberation it is suggested that you don’t make out checks in advance.

Proposed registration fee will be \$ 175.00 per child. This fee has been set to help defray a variety of expenses. You can make payment using cash or check ONLY. Phone registrations, mail in or faxes are not accepted.

WHO IS ELIGIBLE: Coventry residents currently in grades K-8 (2008-2009) school year. Please note: Kindergarten will be in groups by themselves within the Peewee Division. Children in grades 1 and 2, 3-4, 5-6, 7-8 are not placed in preferred groups. Upon registering, each child will receive a packet containing an events calendar, 1st and 2nd week news bulletin,

Parks & Recreation policies and other important data. You are expected to read the entire packet thoroughly (even if you have been involved in camp year after year. There is always new information)

WHAT IF you are not around on June 6th ?

- 1) Parents can fill out the registration form, sign it and make a copy of your license and then have someone register your child.
- 2) Beginning, **Monday, June 8th** we will continue taking registration in the recreation office during normal business hours. **Remember:** Registration is on a first-come, first serve basis. Registration closes when camp divisions fill, or June 30th .

HOW DO I prove residency?

- 1) Driver’s license
- 2) Utility bill, mortgage statement etc.

WHAT IF my last name differs from child’s last name?

(How do I prove that this is my child)?

- 1) **tax return information**
- 2) **medical card/report with both parent/child names on it**
- 3) **anything else that will prove that you are this child’s parent**

2009 SUMMER PLAYGROUND PROGRAM

July 1st – August 7th

COVENTRY RESIDENTS ONLY

Camp is open from 9 am. – 4:00 pm., Monday thru Friday. **Divisions will be based on the school grade of your child during the 2008-2009 school year.** Parents must drop off and pickup children at the appropriate site listed below. Earliest drop-off 8:00am at there respective sites. The number of staff at each site will be based upon actual enrollment numbers.

New this year

children are able to attend camp if they choose not to go on the scheduled field trip. At camp those children will be playing group games, taking part in competitions, scavenger hunts and team building activities, creating art projects, visiting the Teen Center, swimming at Briar Point and taking part in many more exciting activities that the Camp Staff will provide.

PEEWEE CAMP (Grades K-2) Foster Park, Station St. (LIMIT: 210)

Field Trips

Chuck E.Cheese, Casey Farm, Fantasyland , Kaleidoscope Theater, Mystic Aquarium, Roger Williams Park Zoo.

Kindergarteners will experience Biomes Center, Build a Bear Workshop, Regal Reptiles and most of the above trips.

JUNIOR CAMP (Grades 3-4) Foster Park, Station St. (LIMIT: 210)

Field Trips

Southwicks Zoo, Ocean State School of Gymnastics, Trampoline Place, Fantasyland, Chuck E. Cheese, Yawgoo Water Park, Roger Williams Park Zoo, Casey Farms, Kaleidoscope Theater, Pawsox Game.

DISCOVERY CAMP (Grades 5-6) Paine Field, Rte 117(LIMIT 210)

Field Trips

Adventureland, Mystic Aquarium, Southwicks Zoo, Casey Farms, Trampoline Place, Ocean State School of Gymnastics, Pawsox Game, Yawgoo Water Park, Lazergate, Lizzy Borden Museum.

ADVENTURE CAMP (Gr. 7-8) Paine Field, Rte 117 (LIMIT: 130)

Field Trips

Canobie Lake, Water Wizz on the Cape, Ocean State School of Gymnastics, Trampoline Place, Yawgoo Water Park, Pawsox Game, Adventureland, Sail Newport, Lazergate, Lizzie Borden and RISD Museums and various beaches.

ALL camps will visit United Skates, Legion Bowl, Spring Lake Beach
Peewee & Junior Camps will experience weekly trips to Briar Point Beach.
Discovery/Adventure Camps will use the skate park and Teen Center.

PERMISSION SLIP POLICY

- ** Permission slips are required in advance for attendance on all field trips.
 - ** Permission slips and weekly bulletins will be given to your children each Monday (and daily throughout the week) for the following week's trips.
 - ** Slips may be returned **ANYTIME** during the week, but no later than noon Friday to the Special Event Supervisor at your child's playground location.
- THE SPECIAL EVENTS SUPERVISOR IS THE ONLY STAFF PERSON ALLOWED TO HANDLE MONEY!**
- ** Payment is cash only for all field trips. We do not make change.
 - ** The entire slip and the exact amount of cash should be placed in a sealed envelope with your child's name, camp division, week and group number (given on the 1st day). In case of weekly changes, **do not** copy permission slips.
 - ** There needs to be a separate envelope for each child.
 - ** After NOON on Friday the Special Event Supervisor will not take any more slips or money. **No refunds will be made.**
 - ** At that point a LIMITED number of late slips will be accepted at the Parks & Recreation Office (NOT the Special Events Supervisor) beginning at 3pm on that same Friday. We reserve the right to refuse late submittals.

DISCIPLINE POLICY

The Recreation Department operates using a progressive 3 strike policy. Your child's group supervisor/coordinator will handle the first few issues. If a 3rd incident occurs then you will receive a warning for you to speak to your child about changing his/her behavior. If another incident occurs then your child will be suspended from 1-3 days effective the very next day. At that point any money that you have pre-paid for trips will be lost. The next suspension will last for one week. If your child still exhibits poor behavior then he/she will no longer be allowed to return to camp. The severity of each issue is handled on an individual basis. Some issues deserve immediate attention that may result in an immediate suspension. Discretion is left up to the Recreation Dept's administrative staff, not counselors.

LATE FEE POLICY

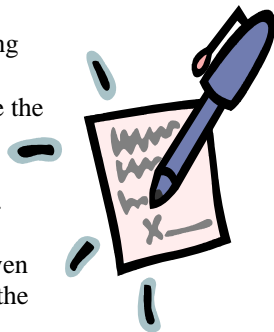
For all youth programs, your child's future participation is contingent on your timely picking up after each session. We will charge a late fee of \$5.00 for each 10 minutes or portion thereof when picking up your child late. Late fees are due and payable in cash at the Parks & Recreation office before your child is brought to camp the following day. A detailed LATE FEE POLICY will be handed out at registration.

RAINY DAY POLICY

Please bring children to camp and pick them up at the end of day as normal. **Do not** bring them to an alternate rain site. Depending on weather conditions the children may be brought to one of three indoor locations: Blackrock School, Flat River Gymnasium and the Community Center. In the event of rain, if an outdoor trip is scheduled **we will do our best** to either attend that trip or take an indoor trip (such as skating, the movies etc. in its place).

ESSENTIAL POINTS for PARENTS TO FOLLOW

1. Children should bring labeled bag lunches, plenty to drink, sun block, hats, spending money and back packs **EVERYDAY**. We do not want children to bring personal items (IPODS, CELL PHONES, HAND HELD GAMES, etc.)
2. Beverages are sold at BOTH camp sites. We do not make change. Snacks are available through a private vending machine @ Paine.
3. Peewees, Juniors and Discovery camps will receive free T-Shirts. Review your calendar for distribution dates. Camp shirts must be worn on all field trips. No alterations please.
4. Follow the signs for pick-up/drop-off locations. Park speed limit is 10 mph. **For safety sake we insist on full compliance.**
5. We are not responsible for any handling or administering medication.
6. Discovery and Adventure camps will be allowed to use the skate park at certain times. Only those wearing proper safety equipment are allowed to use the skate park. There will be time allotted for both skateboards and bikes.
7. Campers must be dropped off **no later** than 9:15am. Parents should **never** bring a camper to a field trip site (even if they have already paid) without letting the office know the week prior. Reasons for this are too numerous to list.



HERSHEY TRACK & FIELD MEET

The local Hershey Track and Field Meet will be held at the Coventry High School track on **Thursday, July 2nd** at 10:30am. In case of rain the event will be held on Monday, July 6th. Participants will have the choice of competing in running competitions, a softball throw and long jump. Winners must provide the Recreation Dept. with a copy of their birth certificate and a signed state registration form (handed out to the winners after the local event). Local winners must be able to attend the State Competition held at Rhode Island College on Friday night, July 10th Winners will ride up to RIC in the Coventry Team Bus at 3:30pm sharp. Rain date is Sat. July 11th at 10am.

MAJOR PARK COMPLEXES

Herbert F. Paine Memorial Park - Located at 1277 Main Street at the rear of the Coventry Recreation Comm. Center. Lighted baseball and softball fields and basketball courts. Four tennis courts and 2 playgrounds. Seasonal food concessions and restrooms. (12 Acres) Skate Park is open daily until dusk.

John J. Giblin Memorial Recreation Area - Located in Hunter's Crossing off Knotty Oak Road, includes 1 playground, a softball field, basketball, tennis and volleyball courts. Also proposed are two additional playfields, and parking.

Foster Memorial Park - Located 1/4 mile north on Station Street from intersection of Main Street in Washington village. Four baseball/softball fields, three soccer fields, hiking trail, volleyball court. Seasonal food concession and restrooms. 60 Acre conservation easement (Total 86 Acres)

Rice Field - Located at 7 Knotty Oak Road, (Rte. 116). Offers two lit football fields. Baseball - Softball field and playground. Seasonal food concession. Restrooms, Pavilion, Meeting room. (8 Acres)

Closed while under redevelopment for 08/09.

Central Coventry Park - Located at the end of Provident Place off Phillips Hill Road in Coventry Center. Presently offers playground facilities, two tennis courts and an 18 station fitness trail. Also Picnic facilities, soccer and softball fields, volleyball and bocce courts are available. Rest rooms, picnic pavilion, Recreation Center and Skate Park are under development for 2008. (26 Acres)

Neighborhood Playgrounds

Harris Playground - Howard Avenue
Quidnick Playground - McArthur Blvd.
Highwood Estates - Ginger Trail

Neighborhood Playfields

Fish Hill Ballfields (2) - Fish Hill Rd.
Memorial Field - Wood Street Quidnick Field - McArthur Blvd.
Colonial Acres - Proposed Playground Monroe Dr.
Greenway Access - Rte 117
Raven Woods (playfields)- Raven Blvd.

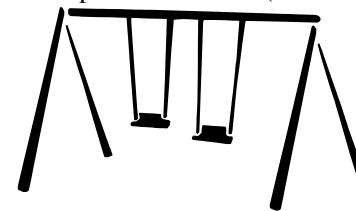
Proposed Neighborhood Playfields/Playgrounds

Arrowwood Subdivision (playground)
Blackrock Subdivision (conservation area)
Cassisi Estates (playground)
Flat River Annex & Field Complex (5 Athletic Fields and Basketball Courts)

Red Brook Meadow (playground)
Hope Furnace Estates (playfields)
Mishnock Estates (playground)
Walker Ridge (active playfields)

Parks are monitored daily by the Park Patrol Staff.

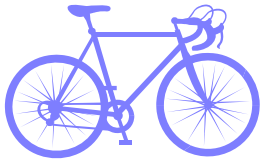
The Paine Field Attendant monitors the skate park and maintains a "lost and found" of all articles.



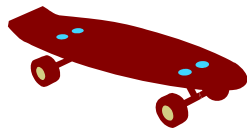
Rules and Regulations

COVENTRY SKATE/ BIKE PARK

Park Hours - (Dawn to Dusk)



- ** Skate/Bike at your own risk. This park is not directly supervised. The Town of Coventry is not liable for any accident or injury to persons or property resulting from the use of this park.
- ** All vehicles must be parked in designated spaces and not in public roadways. Park speed limit is 10 MPH. Parents should use the drop zone.
- ** The use of a helmet is mandatory for any child 15 years of age and younger. Helmet must be properly fit and strapped on. It's a RI State Law.
- ** The use of protective equipment, including knee and elbow pads and wrist guards is strongly recommended. Falls are on asphalt and steel.
- ** Respect each other and the different levels of ability of each. Make room for beginners of all ages. Not everyone is an expert.
- ** Bicycles are only permitted in the park on Mondays, Wednesdays and Fridays from 2-5pm, Tuesdays and Thursdays 6pm-dusk, Saturdays 7am-Noon and 4pm-dusk and Sundays Noon-4pm. All other times are reserved for skateboarders, rollerblades and scooters.
- ** Skating, skateboarding, scooters and bicycles are prohibited in all other court areas and parking lots and driveways.
- ** All skaters, scooters, skateboarders and cyclists should travel with the "flow" of the park and not across it. No motorized equipment.
- ** Do not congregate on park elements or on flat surfaces. No spectators.
- ** Keep all conversation and music levels to a moderate level. Respect the rights of other park patrons and our neighbors.
- ** All patrons should respect the use by others, be considerate of other users, and share the space equally. Serious injury may result from being hit by a skateboard, falling or colliding. The Town of Coventry does not assume responsibilities for injuries or damages.
- ** Graffiti, vandalism, profane language, and the use of tobacco, alcohol or drugs are prohibited. No use of glass containers, and dispose of all trash in barrels; including chewing gum. No food is allowed on the skate park.
- ** All forms of use are at your own risk, weather and conditions permitting.



CONSERVATION AREAS and WATERFRONT SITES

Walker Farm Preserve- Walker Lane (30 acres)
Merrill S. Whipple Conservation Area- Rte 117 (29 acres)
Foster Memorial Park Conservation Area- Station St. (60 acres)
Hope Meadows and Sandy Acres- Sandy Bottom Rd. (27 acres)

Public Boat/ Canoe Launches

Lake Tiogue - From Tiogue Ave. and North Glen Dr.
Flat River Reservoir - Zeke's Bridge, Harkney Hill Rd.
Carbuncle Pond - Route 14 (No gasoline engines)
Green Acres- Walnut Hill Rd. (canoes only)
Francis H. Sherman Mem. Park-Johnson's Pond,
from/old Rte 117, Cov. Ctr. (canoes only)
(Personal Watercraft Permits are required to enter Tiogue Lake)
Call 822-9107 for info.

Proposed Boat/ Canoe Launches

Wood Street Access - Pawtuxet River, Washington Village
Merrill S. Whipple Conservation Area/ Sandy Acres
Pawtuxet River, Washington Village
Coventry Greenway - Pawtuxet River, from Pilgrim Ave, Anthony
Coventry Greenway Access, Rte 117

BRIAR POINT BEACH and PICNIC AREA

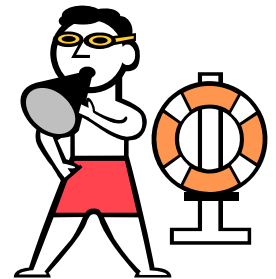
Located at the end of Briar Point Avenue off Arnold Road.

Offers swimming and picnic facilities with lifeguards
on duty 9:00am to 5:00pm 7 days a week. June 19th -
Labor Day. Playground facility and new parking area.
No boating or fishing. New restrooms and pavilion is now open. (6 Acres)

Parking Fees as follows:

- Resident Season Pass \$ 50.00
- Resident Day Rate 5.00
- Non-Resident Day Rate 10.00

Season Passes must be obtained at the Parks & Recreation Department.



The Coventry Parks & Recreation Department is a member of the Rhode Island Recreation and Parks Association (RIRPA), the New England Park Association (NEPA), and the National Recreation and Parks Association (NRPA). Administrative staff are certified under the NRPA Professional certification program.

SUMMER CONCERTS IN THE PARK

All concerts are held on Sunday Nights at 6:00pm.

These events are free to the public. Concerts are tentatively scheduled at Paine Field, Rte. 117 Foster Park, Station St., Rice Field, Rte 116, Briar Point, off Arnold Rd, Central Coventry Park, Provident Place.

At Paine Field

July 5th – *Back Eddy Blue Grass* (Folk & Bluegrass)

July 12^h - *Billy Shears Band* (Beatles Tribute Band)

At Foster Park

July 19th – *Black & White Band* (3 piece swing, rhythm and blues)

July 26th – *Brass Connection*

(5 piece popular music)

At Rice Field

August 2nd – *Gemini* (3 piece oldies & ethnic)

August 9th – *Zee's Country Band*

(5 piece country band-formerly the Harwoods)

At Briar Point

August 16th – *Steddy Eddy* (Classic-current Rock)

August 23rd – *Rockin Soul Horns* (8 piece blues, soul & Mo Town)

At Central Coventry Park

August 30th -- *Branded* (5-6 piece country/oldies)

Sept 6th – *Vini Ames & Sh-bop* (50's-60's hits)

****Bring blankets and lawnchairs, no alcohol permitted.****

In the event of rain, all concerts will be moved to inside of the Community Center's upstairs main hall.

SPECIAL CHILDREN'S PERFORMANCES

are featured in our summer camp calendars. Most performances are held in the Community Center. Summer camp groups get preferred seating.

THE COVENTRY GREENWAY

On the Coventry Greenway you might find yourself hiking through the historic mill village of Anthony, cycling over the Pawtuxet River with its panoramic view of the river banks or trout fishing along the Moosup River or Carbuncle Pond in western Coventry. Our rail trail will provide all these and many more opportunities for our residents, as it will provide linkage to parks, schools, government centers, historic sites, and commercial areas. The fifteen mile stretch of abandoned rail corridor, now under ownership of the Town of Coventry and D.E.M., extends from West Warwick to the Connecticut state border. Support for the Coventry Greenway initiatives, coordinated by the Coventry Parks & Recreation Department, has come from City Year, the R.I. National Guard, local scout troops, and student groups, as well as other civic organizations and area businesses. Without a Parks Department budget appropriation, funding has come from the Symms Trail Program, railroad demolition/salvage fees, legislative appropriations, fines, and donations. The Coventry Public Works Department was instrumental in completing drainage work, grading and bridge reconstruction utilizing a grant from the US Forest Service Timber Bridge Demonstration Project. The first 1.5 mile paved section was opened to the public in September of 1998.

In October 1998, Coventry received a singular national honor when the Rails to Trails Conservancy recognized our trail as the 1,000th U.S. rail-trail conversion and dedicated the 10,000th mile in the village of Greene.

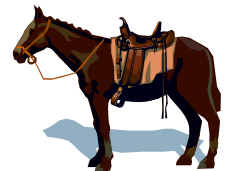
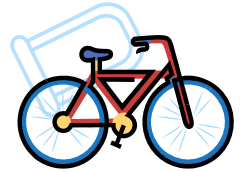
In June of 1999 the Town of Coventry opened an additional 1.2 miles with a new parking lot at Station Street at the eastern terminus of the paved portion.

Both the Town of Coventry and the R.I. DEM are presently under contract with consulting firms to complete the design of their respective portions of the trail. Construction will continue from 2009-2010 when the section from West Warwick to Station Street is scheduled to be completed.

The entire trail thru Coventry has been identified on the official route of the ECG (East Coast Greenway) with the Town's paved portion having already received "official designation" as a Class I bike route. A "Cross Alert System" is located at the infamous crossing of the Trail with Rte 117. The automated device with flashing signals will warn motorists and pedestrians of the need to be extra cautious at this location.

Local, State, and National Greenway maps are available for FREE at the Parks & Recreation Department office. Maps are also on display at the Station St. kiosk. Happy trails for long summer walks and rides!

To learn more about this exciting project contact the Coventry Parks and Recreation Department at 822-9107.



COVENTRY PARKS & RECREATION SUMMER CAMP 2009

Answers to the MOST FREQUENTLY ASKED QUESTIONS

GENERAL KNOWLEDGE

1. Before you call or come into the office with questions please read all the forms that we hand out (both at registration and during the summer season). News bulletins will contain specifics for the week, changes or additions to the program. They, along with the permission slip will be handed out to all children on a weekly basis.
2. Understand that we are running numerous programs simultaneously seven days per week. It is of the utmost importance that we have your cooperation with all of the policies that we set forth.
3. We have 2 camp sites as outlined in our flyer. **Peewee & Junior** camps are located at Foster Park, Station St. **Discovery & Adventure** camps are located at Paine Field, Rte 117.
4. We do not take requests for friends/siblings to be in the same groups. Let's all make new friends. During In Camp days over 90 degrees, we may visit Briar Point Beach to swim. Please have your child prepared with their bathing suit and towel. All children will be bused to the beach on these days. New restrooms are available this year.
5. There is No Smoking in any public park. This includes parents waiting to pick up children. Staff are never permitted to smoke on duty (anywhere).

DROP OFF & PICK UP

1. The earliest you can drop your child off at any camp is 8:00am. Pick up is at 4:00pm for all camps.
2. If you drop your child off at camp later than 9:15am they run the risk of missing important information and/or missing the trip. Picking up and dropping off should be in designated areas only, assigned on the first day.
3. You can only drop your child off at a field trip site if you have already registered for the trip and **notified the office the previous day** that your child will be late. You must check in with the coordinator upon arrival at the field trip. If you are dropping your child off late to a field trip site then you may be expected to pay the admission again!
4. You may pick your child up early from a trip, however you must speak with the Coordinator the day before or before we leave that morning for that particular trip. Always sign out your child.
5. If it rains and a trip is scheduled, in most cases an indoor trip will be scheduled that morning. If not, the children will be brought to the designated rain location, then returned to camp for normal dismissal.
6. Indicate on the registration form **all** those people that you are allowing to pick up your child (**INCLUDING YOUR SPOUSE**). For the safety of your child we will not release your child to anyone whom you did not write on your list, even if we know them.
7. Any adult picking up a child should be prepared to show photo I.D. every time. This is done for your child's safety. If a child is not in his/her pickup location at the end of the day, chances are that a problem/issue has occurred and a coordinator/admin staff wants to speak with you upon pickup regarding this matter. In some cases, especially if issues are re-occurring, your child may be immediately suspended from the program. It is on the ownership of the person that is authorized to pickup the child to relay any message to the parent. If the pickup person chooses not to speak with staff for whatever reason, the child will not be allowed to take part in camp activities until the parent/legal guardian contacts the Parks & Recreation Program Supervisor. NO Exceptions.

PARKS & RECREATION STAFF

1. Staff ratio is approximately 25 campers to 1 group roster. Average attendance is about 15-1. Parent chaperones are not required, we meet staff ratios for all destinations.
2. Staff permitting, we may have our own lifeguard accompany our group to beaches or pools.
3. At water locations, staff are assigned to be in and around the water scanning the children and the swim area. Peewee children may swim to their armpits, Juniors/Discovery/Adventure to the furthest staff person.
5. Staff will not give or hold money for children. If your child brings spending money, it is their responsibility.
6. Staff will not hold or administer any form of medication, nor remind children when to take it.
7. Staff will not be responsible for applying sun block on campers. Kids should arrive with it on every day and bring extra. Every day is a hot day, be prepared to cover up from harmful UV rays. Wear hats.

MISSING CAMP

- 1 You do not have to call if your child is going to be absent for a day or even a week, but plan ahead for field trips upon your return. Don't be left out, get your slip to us in advance.
- 2 In the event a child comes to camp with a contagious condition, i.e. pink eye, head lice, skin condition, etc. that child will be isolated, sent home and not allowed back until we have written confirmation from a doctor that he/she has been treated and is no longer contagious or in some cases cured. We may have to consult the Town of Coventry Human Resource Director before we allow the child to take part in activities.

T-SHIRTS DISTRIBUTION

- 1 Each child will receive 1 t-shirt. See your calendar for distribution days and times. **ONLY** after the final distribution day shirts may be picked up in the recreation office. T-shirts will be given to Grades K-6. **ONLY**. No alterations please.
- 2 Your child must wear their shirt on all field trip days. If your child has not received a shirt prior to going on a field trip, please have them dress in the same color as the camp division. Kinder-purple, Peewee-red, Junior-green, Discovery-blue.

DRESS CODE

- 1 Please make sure that your child comes to camp in proper attire (sneakers for play, bathing suit and towel for water activities, sweatshirt on a cool day).
- 2 Your child is representing the Coventry Parks & Recreation Dept. Please make sure that **your** child is dressed appropriately as you would like them dressed when they are in public with you. If Coventry Parks & Recreation Administration deems your child's attire inappropriate, then you will be called to either bring your child alternate clothing or take your child with you. **(This includes swim attire)**
- 3 Heelies (shoes with roller skates built in to the bottom) are not allowed at any time.

RAINY DAY

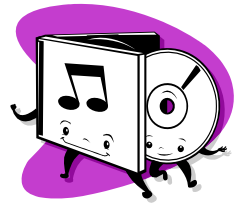
ACTIVITIES ARE HELD AT: COMMUNITY CENTER, FLAT RIVER GYM & HOPKINS HILL SCHOOL

If it rains and a trip is scheduled, in most cases an indoor trip will be scheduled that morning. If not, the children will be brought to the designated rain location, then returned to camp for normal dismissal.

WHAT TO BRING/ WHAT NOT TO BRING

1. Don't forget this is summer camp, not school! We are outside, active and usually very hot. Children will need more than a sandwich, snack and one drink. For your child's sake, you should send him/her with a labeled lunch everyday, plenty of fluids (**A REFILLABLE WATER BOTTLE IS SUGGESTED**) and snacks daily.
2. Label everything your child comes to camp with to avoid confusion, especially field trip envelopes.
1. No toys/equipment are allowed to be brought into camp (except skate park equipment). This includes cd's, i-pods, hand held games etc. Discovery and Adventure camps will be allowed to use the skate park on certain days (refer to your calendars) All proper equipment will be required for skate park use (see skate park rules in flyer).
2. Children can **not** bring goggles or any form of floatation devices including bathing suits with built in floatation
3. Snacks are sold at the Discovery and Adventure sites only. Drinks are sold at all camp sites. Water is available at all camps.
4. Lost and Founds will be located at each camp. See your Special Event Supervisor for missing items.

Coventry Parks & Recreation 2009 Summer Concert Series



SUNDAY NIGHTS

Concerts begin at 6pm and are held at:
Paine Field, Rte 117, Foster Park, Station St, Rice Field, Rte 116, Briar Point Beach
and Central Coventry Park, Provident Place

Concerts at Paine Field

July 5th *Back Eddy Bluegrass Band*
(Folk & Bluegrass)

July 12th *Billy Shears Band*
(Beatles Tribute Band)



Concerts at Foster Park

July 19th *Black & White Band*
(3 piece swing, rhythm & blues)

July 26th *Brass Connection*
(5 piece popular music)



Concerts at Rice Field

August 2nd *Gemini*
(3 piece oldies and ethnic)

August 9th *Zee's Country Band*
(5 piece country-- formerly the Harwoods)



Concerts at Briar Point Beach

August 16th *Steddy Eddy*
(Classic-current rock)

August 23rd *Rockin' Soul Horns*
(8 piece rhythm & blues, soul & MoTown)



Concerts at Central Coventry Park

August 30th *Branded*
(5-6 piece country and oldies)

September 6th *Vini Ames & Sh-Bop*
(50's & 60's music)

In the event of rain, all concerts will be moved to the inside of the Community Center's
upstairs main hall, 1277 Main St Rte 117.

Blankets or lawn chairs are suggested.

No smoking or Alcoholic Beverages Allowed.

Donations will be accepted.



Directions to Central Coventry Park

- Route 117 West to Coventry Center
 - Turn left on to Hill Farm Rd.
- Turn right at the fork in front of the Men's club onto Phillips Hill Rd.
 - Turn left onto Provident Place.
 - Follow all the way to the end (1/4 mile).
- Please follow all speed limits and directional arrows.

Directions to Briar Point Beach

- Tiogue Avenue to Arnold Rd.
- Continue on Arnold Rd. for $\frac{3}{4}$ mile
 - Turn left onto Briar Point Avenue
 - Follow signs for Briar Point Beach